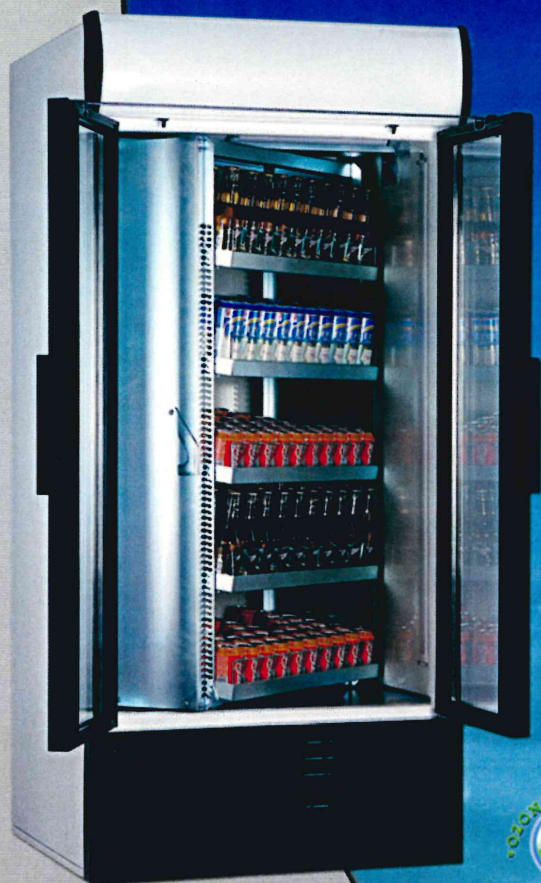


S 880 ROTO* DOUBLE DOOR COOLER

* Patent pending



KLIMASAN REFRIGERATION

"experts in cooling technology"

STANDARD FEATURES

- Climate class 4.
- Temperature range: 0 / +13 °C
- Fan assisted cooling.
- Adjustable thermostat.
- Double glazed safety glass door.
- 2 vertical internal lights.
- Internal light switch.
- 4 adjustable leveling legs.
- Prepainted steel sheet inner liner.
- Steel sheet body with electrostatic powder paint.
- Ozone friendly refrigerant R134a and polyurethane foam with cyclopentane.
- Easy maintenance for cooling equipment.
- 220 - 240 V / 50 Hz.

OPTIONAL FEATURES

- Thermometer
- Energy management system
- Door lock
- Sticker application
- Coloured body availability
- 115 V / 60 Hz

TECHNICAL SPECIFICATIONS

Temperature Range	(°C)	0 / +10
External Dimension	(WxDxH) mm	880 x 865 x 2010
Internal Dimension	(WxDxH) mm	805 x 725 x 1570
Packed Dimension	(WxDxH) mm	917 x 885 x 2130
Gross Volume	(Lt)	914
Net Volume	(Lt)	700
Can Capacity	330 cc cans	370
Bottle Capacity	500 cc bottles	370
Gross Weight	(Kg)	241
Net Weight	(Kg)	230
Loading Quantity	40'ft	28
	40'HC	28
	Optima truck	30

代理商：

中盛制冷設備公司

SINO SHINE SUPPLIES & SERVICES CO.

Flat 12, 2/F., Cardinal Industrial Building,

17 On Lok Mun St., Fanling, N.T., Hong Kong.

Tel: (852) 2682-8846 / 2682-8068 Fax: (852) 2638-5981

E-Mail : info@sinoshine.imsbiz.com.hk

